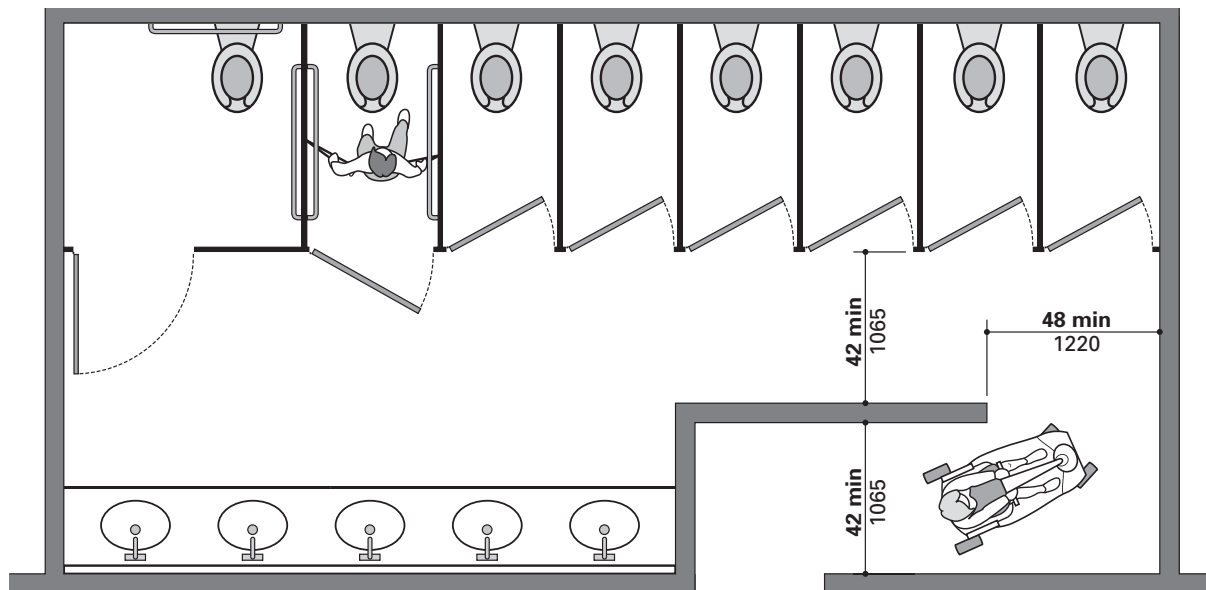


TB.1 Walk-in accessible stall and wheelchair accessible stall in a public restroom.



TB.2 Minimum clearances for an accessible public restroom entrance **without a door**

- G1** Equip all public restrooms with uniform accessible counters, lavatories, faucets, mirrors, and other features instead of installing “special” accessible features (such as sloped mirrors). **ae**
- G2** Ensure that at least one lavatory is accessible. **ADAAG: 1998 4.22 & 2004 213**
- G3** Where only one accessible lavatory is provided in a multi-user toilet room, ensure that it is **not** located within a toilet stall. **ADAAG: 1998 4.22 & 2004 213 See FX Fixtures.**

- G4** Ensure that at least one mirror is accessible and is installed at the appropriate height. **ADAAG: 1998 4.22 & 2004 213 See FX Fixtures, FX-J**
- G5** Ensure that at least one of each type of control, dispenser, receptacle, coat hook, shelf, and other fixture is accessible. **ADAAG: 1998 4.22 & 2004 213 See FX Fixtures and RR Reach Ranges.**

- G6** Where bathtubs and/or showers are provided, ensure that at least one bathtub or shower is accessible. **ADAAG: 1998 4.23 & 2004 213**

H Signs

Provide accurate, accessible signs in all appropriate locations in new or existing buildings to identify accessible restrooms. For specific sign requirements, including features of characters, mounting locations, and heights, **see SN Signs**.

- H1** Where not all toilet rooms and/or bathrooms are accessible, install accessible visual signs that include the International Symbol of Accessibility to
- a. identify permanent accessible toilet rooms, bathrooms, or clusters of single user toilet rooms; and
 - b. direct people to the nearest accessible toilet room or bathroom.
- ADAAG: 1998 4.1 & 2004 216 See SN Signs.**

I Doors

Convenient entry to toilet rooms and/or bathrooms is essential for accessibility. Doors along accessible routes to toilet rooms and bathrooms must be accessible. In toilet rooms and/or bathrooms that have vestibules or double door entries, both doors should open in the same direction. If the doors both swing into a small entryway, navigating with a wheelchair or crutches is difficult.

The ADAAG does permit doors to swing into the wheelchair turning space in vestibules, however, it is best to provide sufficient space so that doors do not swing into wheelchair turning space. **ADAAG: 1998 4.22, 4.23 & 2004 603 See DR Doors.**

Entryways that have privacy walls or panels rather than doors may be easier to use. The space between privacy walls or panels and interior walls must be sufficiently wide to allow for maneuvering. **See RT Routes and Spaces.**

- I 1** Ensure that doors to accessible toilet rooms and bathrooms are accessible. **See DR Doors. ADAAG: 1998 4.22, 4.23 & 2004 603**
- I 2** Install doors so that they do not swing into required clear floor space or other required

space for any fixture.
ADAAG: 1998 4.22, 4.23 & 2004 603

Exception: This requirement does not apply where (1) the toilet room and/or bathroom is for private use (such as in a private office) and where the door is hung so it can be reversed to meet the standard, or (2) the clearfloor space beyond the arc of the door swing is a minimum of 30in. (760mm) by 48in. (1220mm). **ADAAG: 2004 603 (NEW)**

J Clear Floor Space

Wheelchair turning spaces should be located to provide the greatest access possible to accessible fixtures and toilet stalls. Toilet rooms and/or bathrooms should be designed to minimize the amount of backing up required to use accessible fixtures and accessories. It is especially important to provide adequate approach and maneuvering space outside toilet stalls. Check the required clearances at all fixtures and provide appropriate total clear floor space. **See TS Toilet Stalls, BT Bathtubs, SS Shower Stalls, and FX Fixtures.**

- J1** Locate all accessible fixtures and toilet stalls along accessible routes. The clear floor space in front of fixtures and controls may overlap accessible routes and/or turning space. **ADAAG: 1998 4.22, 4.23 & 2004 603**
- J2** Ensure adequate unobstructed wheelchair turning space in toilet rooms and/or bathrooms by providing one of the following:
- a. a circular area 60in. (1525mm) in diameter; or
 - b. a T-intersection 60in. (1525mm) deep with legs at least 36in. (915mm) wide. For additional provisions for T-intersections **ADAAG: 1998 4.22, 4.23 & 2004 603 See RT Routes and Spaces, RT-G.**
- J3** Where turns around a privacy wall are necessary to enter a restroom, ensure that a minimum of 48in. (1220mm) is provided between the end of the privacy wall and any wall or obstruction.
ADAAG: 1998 4.3 & 2004 403 See RT Routes and Spaces.

Refer to Figures TB.2 and TB.3