

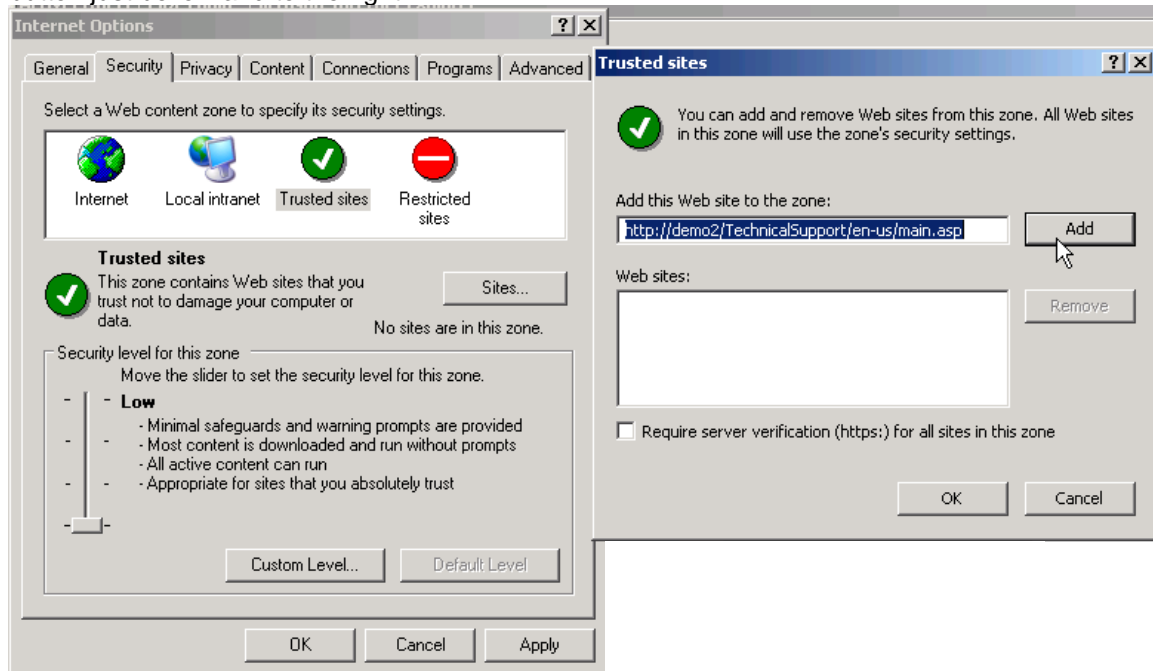
Setting up Centric Project Instructions

Users will experience problems in Centric Project unless it is set as a Trusted Site in Internet Explorer.

To add Centric Project to your trusted sites do the following:

-With Internet Explorer open, Go to the 'Tools' menu and select 'Internet Options...'

-Go to the 'Security' tab, select the green 'Trusted Sites' icon and then click on the 'Sites...' button just below and to the right



-Uncheck the box for 'Require server verification ([https:](https://)) for all sites in this zone' at the bottom

-Type in "<http://fpams010.ats.iastate.edu>" (w/o the quotes) into the box at the top labeled 'Add this Web site to the zone:' Then click the 'Add' button

-Also add "<http://projects.fpm.iastate.edu>" as a trusted site

-Click 'Close' on the 'Trusted Sites' window.

-Make sure the Trusted Sites Security level is set to low. If no slider to adjust the security level is visible, click the button labeled "Default Level" and then set the slider to low.

-Now click 'OK' on the 'Internet Options' window

-Close IE to ensure settings are saved and applied.

If you need help or have any questions please call or email David Wanat at **515-520-1485**, dwanat@iastate.edu