



Notice of Construction Hyland Closure

**Public Works Department
Engineering Division**

**515 Clark Ave.
Ames, Iowa 50010**

515.239.5160



Ames Public Works

**Hyland Ave
Project Website**



Contact Information:

**Project Engineer
Dean
515-239-5277**

**Project Inspector
Jesus
515-203-0797**

**All Star - Project Manger
Steve
515-224-6394**

Hyland Ave from Ontario St to 1015 Hyland Ave to close.

Starting Date: Weather permitting, beginning **Monday May 19th**.

Stage 1 of the project will close Hyland Ave from Ontario Street to 1015 Hyland Ave (just north of the Unitarian Universalist Fellowship church) This stage of the project will include pavement replacement, utility improvements and the construction of a new shared use path.

The sidewalk and bike lanes within Stage 1 will be closed to through traffic. Residents without driveway access will still have a maintained pedestrian path to their homes. Bicycle traffic should use North Dakota Avenue as a detour route. Pammel Drive will remain open during Stage 1 but will be closed during Stages 2 and 3 of the project. See Hyland Ave project website for vehicle and biking detour maps.

Anticipated Duration: Stage 1 is expected to be completed in 5-7 weeks.

Action Required by Residents:

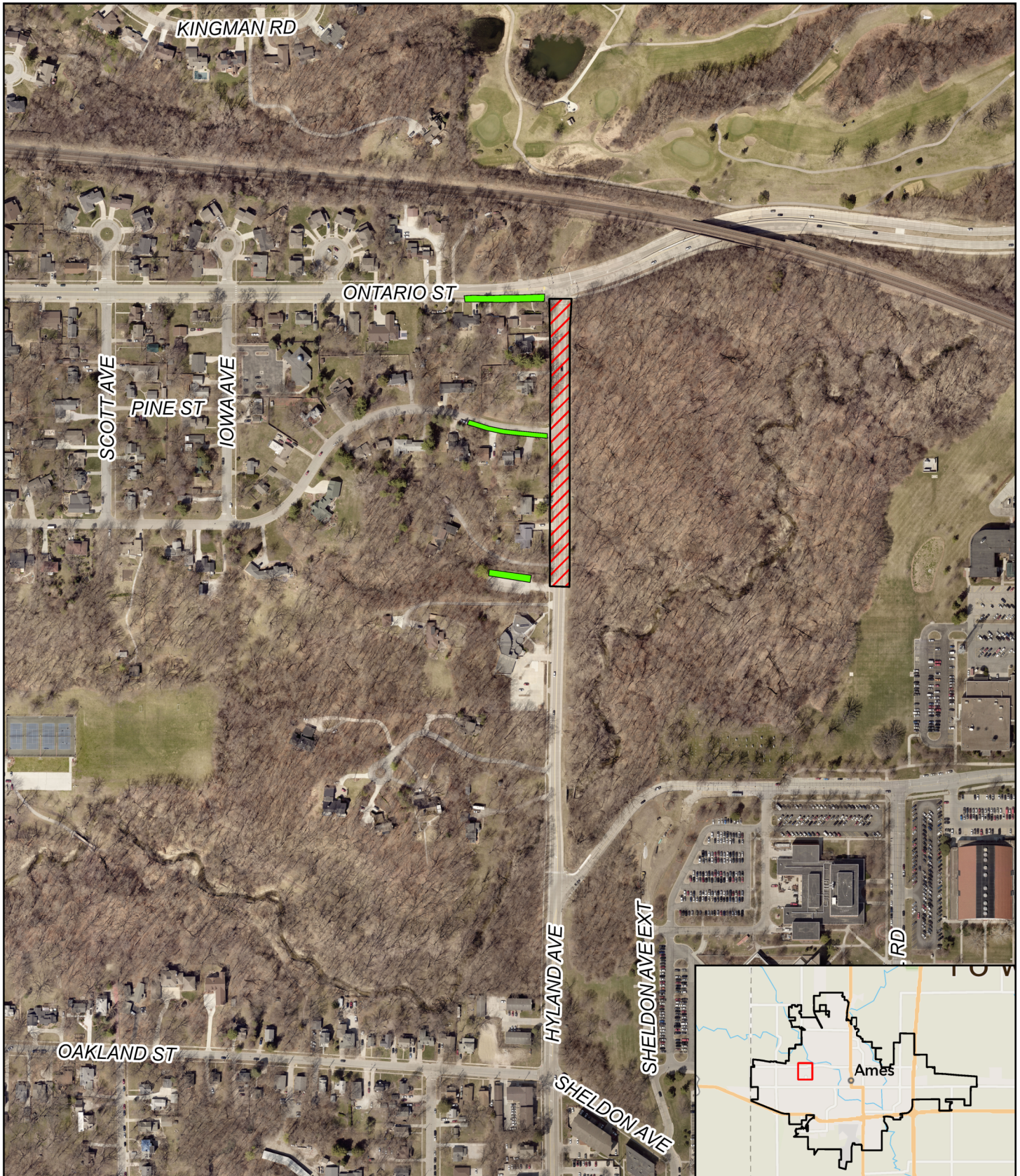
Please follow all posted parking signage along Ontario Street and Ross Road. Residents without driveway access may park in the Unitarian Universalist Fellowship church's north driveway during weekdays but must relocate to the reserved spots along Ross Road on weekends. Reserved spots will remain in place every day. Review the anticipated work zones on the back of this notice. While these zones are subject to change, they provide a general idea of the project location.

Garbage Collection: Set out your garbage can as usual. The contractor will move cans to a designated pick-up location for collection services. To ensure your can is returned to the correct address, it is recommended that you tape your address to it. **Landscaping in the Right-of-Way:** Residents with landscaping in the right-of-way should remove any plants or objects, as they may be damaged or removed during construction. All green areas will be restored upon project completion.

Project Details: The City of Ames has contracted with All Star Concrete for the reconstruction and rehabilitation of Hyland Avenue. The project will include three stages of full PCC pavement replacement from Ontario Street to Pammel Drive, as well as patching and rehabilitation at select locations between Pammel Drive and Lincoln Way. As part of the project, the existing bike lanes on Hyland Avenue from Ontario Street to Oakland Street will be removed from the roadway and relocated to a new shared use path along the west side of Hyland Avenue. For more information visit our project website at <https://www.cityofames.org/hyland> or use the QR code on the left side of this notice

(See attached map on reverse)

2024/25 Arterial Pavement Improvements Hyland Ave Closure



Hyland Ave Closure



Alternate Parking

N

